

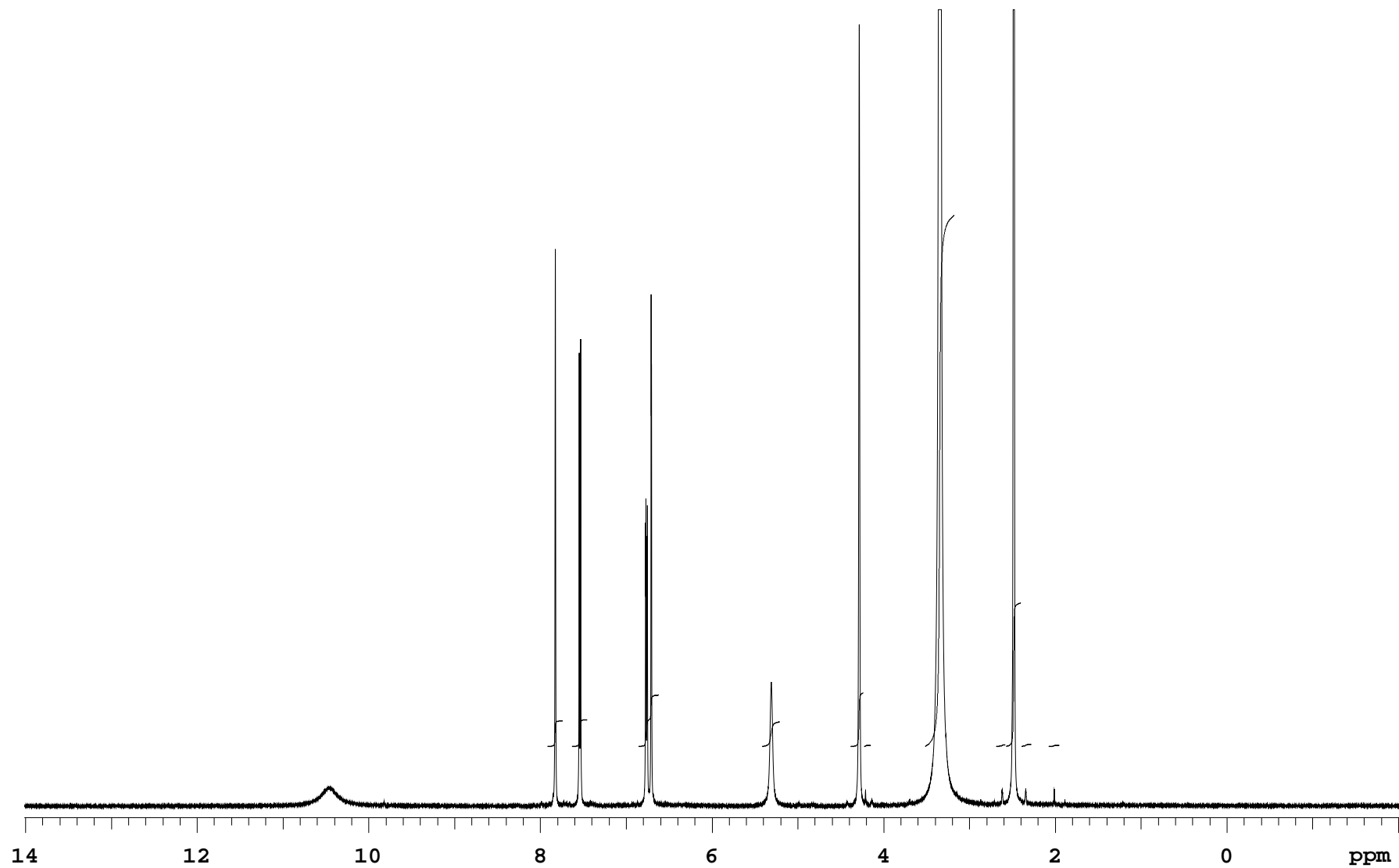
mlo346_dms

Sample Name **mlo346_dms**
Date collected **2018-07-18**

Pulse sequence **PROTON**
Solvent **dms**

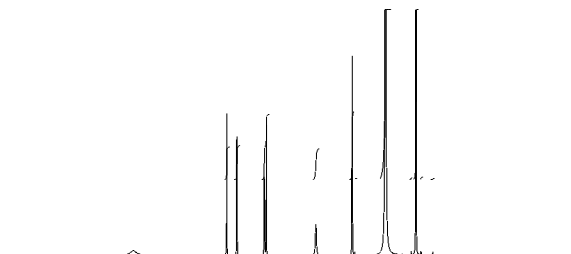
Temperature **25**
Spectrometer **chpc-nmr500a-vnmrs500**

Study owner **mlo22**
Operator **mlo22**



mlo346_dms0

Sample Name	mlo346_dms0	Pulse sequence	PROTON	Temperature	25	Study owner	mlo22
Date collected	2018-07-18	Solvent	dms0	Spectrometer	chpc-nmr500a-vnmrs500	Operator	mlo22



INTEGRAL VALUES

Integral	start(ppm)	end	value
1	7.92164	7.73923	2.954
2	7.63556	7.44875	3.102
3	6.85899	6.61595	5.951
4	5.41687	5.20561	2.847
5	4.38797	4.23344	6.197
6	4.23295	4.1464	0.125
7	3.518	3.17227	61.573
8	2.69009	2.58006	0.212
9	2.58006	2.39521	16.637
10	2.39521	2.2754	0.263
11	2.07979	1.94629	0.138

SAMPLE

date Jul 18 2018
solvent dms0
file /home/bath/vnmrsys
/data/mlo22/mlo346_dms0_
20180718_01/PROTON_01.f
d

PRESATURATION

satmode n
wet n

SPECIAL

temp 25.0
gain 36
spin 0
hst 0.008
pw90 7.800
alfa 10.000

ACQUISITION

sw 8012.8
at 2.045
np 32768
fb 4000
bs 32
d1 1.000
nt 8
ct 8

FLAGS

il n
in n
dp y
hs nn

TRANSMITTER

tn H1
sfrq 500.062
tof 500.1
tpwr 60
pw 3.900

PROCESSING

fn 65536

DISPLAY

sp -1005.8
wp 8012.6
rfi 1006.0
rfp 0
rp -56.1
lp 0

DECOUPLER

dn 0
dof nnn
dm W40_OneNMR
decwave 38
dpwr 32258
dmf

PLOT

wc 234
sc 8
vs 433
th 1
ai cdc ph

Plotname: PROTON_01_plot01

Data file /home/bath/vnmrsys/data/mlo22/mlo346_dms0_20180718_01/PROTON_01.fid

Plot date 2018-07-18